



PAWAN KANSAL

'... A solid knowledge of markets, trends, applications and consumer behaviour is indispensable, but the foundation of the company's success is created by mutual trust and the personal dedication of everyone involved...'



COMPANY PROFILE

FACTORY DETAILS

Total factory area : 90,000 sq. ft.
 Future planned area : 1,40,000 sq.ft.
 Established : 1984

Staff Details

Management Executive : 20
 R&D Staff : 5
 Sales & Marketing : 8-10
 Production Staff : 700
 Q. C. Staff : 20

Main Products

Stainless Steel
 Cutlery, Kitchen
 Tools, Utensils,
 Bar Items, Petware,
 Houseware, Hotelware, Gift
 & Promotions
 Bathroom Accessories,
 Tableware & Gadgets

Total Amount Turnover : US \$ 8.0 mil

Monthly Capacity : 200-250 tons

Quality Standard : ISO 9001-2000

Origin of Raw Material

i) INDIAN : 80%

ii) Imported : 20%

Major Market

INDIA, GERMANY, UK,
 FRANCE, GREECE,
 AUSTRALIA, ITALY,
 BRAZIL, RUSSIA,
 ARGENTINA, DUBAI,
 SOUTH AFRICA,
 ISRAEL, USA

Our Brands

Jagdamba



CUTLERY

BLUE BELLS CUTLERY GOLD FINISH

CODE : JCBG 241	
JCBG 24110	TEA SPOON (3.0MM)
JCBG 24112	DESSERT SPOON (4.0MM)
JCBG 24142	DESSERT FORK (4.0MM)
JCBG 24113	TABLE SPOON (4.0MM)
JCBG 24143	TABLE FORK (4.0MM)
JCBG 24153	TABLE KNIFE (FORGED)



BOSTON CUTLERY WITH TITANIUM FINISH

CODE : JCBT 229	
JCBT 22910	TEA SPOON (3.0MM)
JCBT 22912	DESSERT SPOON (4.0MM)
JCBT 22942	DESSERT FORK (4.0MM)
JCBT 22913	TABLE SPOON (4.0MM)
JCBT 22943	TABLE FORK (4.0MM)
JCBT 22953	TABLE KNIFE (FORGED)

MONICA CUTLERY WITH COPPER FINISH

CODE : JCMC 206	
JCMC 20610	TEA SPOON (3.0MM)
JCMC 20612	DESSERT SPOON (4.0MM)
JCMC 20642	DESSERT FORK (4.0MM)
JCMC 20613	TABLE SPOON (4.0MM)
JCMC 20643	TABLE FORK (4.0MM)
JCMC 20653	TABLE KNIFE (FORGED)



JAY

JCJ 268	
JCJ 26835	COFFEE SPOON (5.0MM)
JCJ 26810	TEA SPOON (5.0MM)
JCJ 26841	CAKE FORK (5.0MM)
JCJ 26812	DESSERT SPOON (5.0MM)
JCJ 26842	DESSERT FORK (5.0MM)
JCJ 26859	DESSERT KNIFE (FORGED)
JCJ 26813S	SOUP SPOON (5.0MM)
JCJ 26838	COCKTAIL SPOON (5.0MM)
JCJ 26860	STEAK KNIFE (FORGED)
JCJ 26813	TABLE SPOON (5.0MM)
JCJ 26843	TABLE FORK (5.0MM)
JCJ 26853	TABLE KNIFE (FORGED)
JCJ 26814	BUTTER KNIFE (5.0MM)
JCJ 26846	FISH FORK (5.0MM)
JCJ 26868	FISH KNIFE (5.0MM)



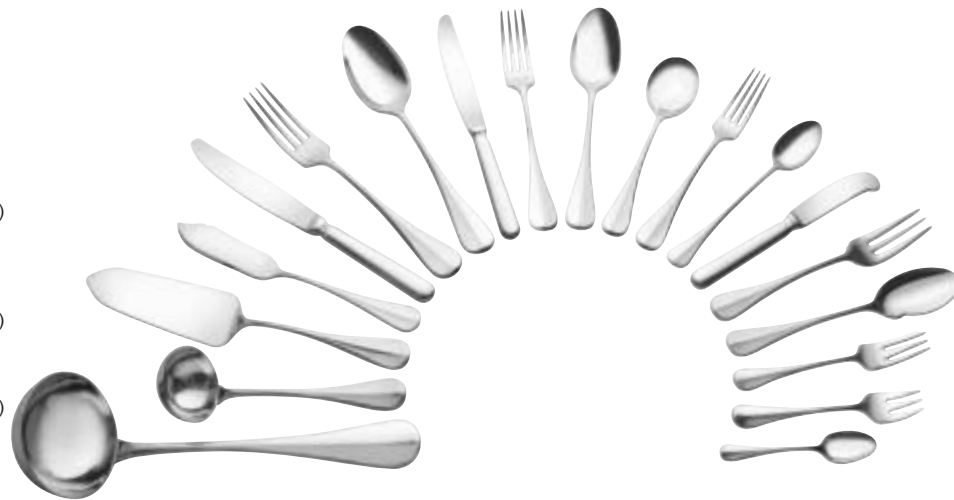
HAMMERED CUTLERY

CODE : JHCSH 216	
JHCSH 21635	COFFEE SPOON (4.0MM)
JHCSH 21610	TEA SPOON (5.0MM)
JHCSH 21641	CAKE FORK (5.0MM)
JHCSH 21612	DESSERT SPOON (5.0MM)
JHCSH 21642	DESSERT FORK (5.0MM)
JHCSH 21659	DESSERT KNIFE (FORGED)
JHCSH 21612S	SOUP SPOON (5.0MM)
JHCSH 21613	TABLE SPOON (5.0MM)
JHCSH 21643	TABLE FORK (5.0MM)
JHCSH 21653	TABLE KNIFE (FORGED)
JHCSH 21668	FISH KNIFE (5.0MM)
JHCSH 21646	FISH FORK (5.0MM)
JHCSH 21660	STEAK KNIFE (5.0MM)
JHCSH 21617	SERVING SLOTTED SPOON (5.0MM)

CUTLERY

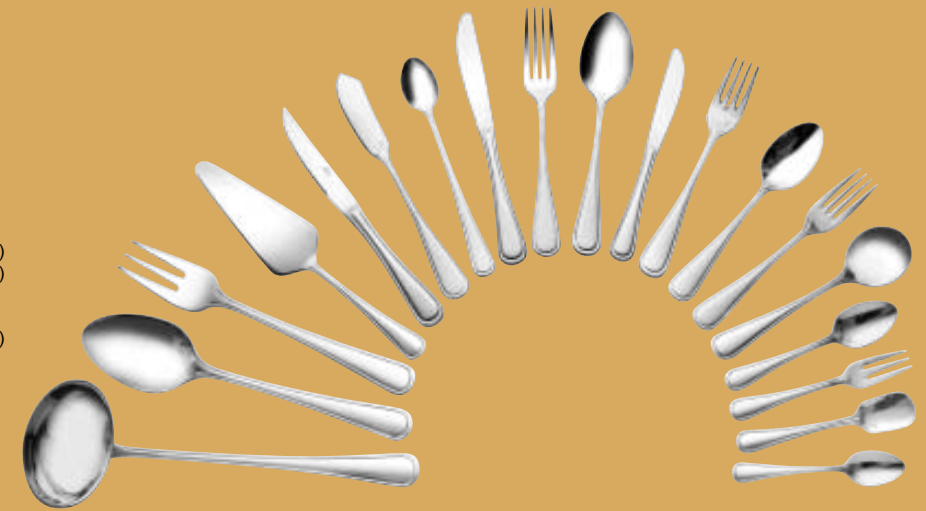
NEW ROSEMARY CODE : JCNR 196

JCNR 19635	COFFEE SPOON	(2.5MM)
JCNR 19610	TEA SPOON	(2.5MM)
JCNR 19641	CAKE FORK	(2.5MM)
JCNR 19603	ICE CREAM SPOON	(2.5MM)
JCNR 19612	DESERT SPOON	(3.0MM)
JCNR 19642	DESERT FORK	(3.0MM)
JCNR 19659	DESERT KNIFE	(FORGED)
JCNR 19613S	SOUP SPOON	(3.0MM)
JCNR 19638	COCKTAIL SPOON	(2.5MM)
JCNR 19613	TABLE SPOON	(4.0MM)
JCNR 19643	TABLE FORK	(4.0MM)
JCNR 19653	TABLE KNIFE	(FORGED)
JCNR 19646	FISH FORK	(3.0MM)
JCNR 19668	FISH KNIFE	(3.0MM)
JCNR 19614	BUTTER KNIFE	(2.5MM)
JCNR 19660	STEAK KNIFE	(FORGED)
JCNR 19616	SERVICE SPOON	(4.0MM)
JCNR 19640	SERVICE FORK	(4.0MM)
JCNR 19637	SAUCE LADLE	(4.0MM)
JCNR 196110	SOUP LADLE	(4.0MM)



NEW GOURMET CODE : JCNG 249

JCNG 24935	COFFEE SPOON	(2.5MM)
JCNG 24910	TEA SPOON	(2.5MM)
JCNG 24941	CAKE FORK	(2.5MM)
JCNG 24903	ICE CREAM SPOON	(2.5MM)
JCNG 24912	DESERT SPOON	(3.0MM)
JCNG 24942	DESERT FORK	(3.0MM)
JCNG 24959	DESERT KNIFE	(FORGED)
JCNG 24960	STEAK KNIFE	(FORGED)
JCNG 24913	TABLE SPOON	(4.0MM)
JCNG 24943	TABLE FORK	(4.0MM)
JCNG 24953	TABLE KNIFE	(FORGED)
JCNG 24913S	SOUP SPOON	(3.0MM)
JCNG 24938	COCKTAIL SPOON	(2.5MM)
JCNG 24946	FISH FORK	(3.0MM)
JCNG 24914	BUTTER KNIFE	(2.5MM)
JCNG 24916	SERVICE SPOON	(4.0MM)
JCNG 24940	SERVICE FORK	(4.0MM)
JCNG 24937	SAUCE LADLE	(4.0MM)
JCNG 249110	SOUP LADLE	(4.0MM)



NATURE JCN 262

JCN 26235	COFFEE SPOON	(2.5MM)
JCN 26210	TEA SPOON	(2.5MM)
JCN 26241	CAKE FORK	(2.5MM)
JCN 26203	ICE CREAM SPOON	(2.5MM)
JCN 26212	DESERT SPOON	(3.0MM)
JCN 26242	DESERT FORK	(3.0MM)
JCN 26259	DESERT KNIFE	(FORGED)
JCN 26260	STEAK KNIFE	(FORGED)
JCN 26213	TABLE SPOON	(4.0MM)
JCN 26243	TABLE FORK	(4.0MM)
JCN 26213S	SOUP SPOON	(3.0MM)
JCN 26238	COCKTAIL SPOON	(2.5MM)
JCN 26246	FISH FORK	(3.0MM)
JCN 26268	FISH KNIFE	(3.0MM)
JCN 26214	BUTTER KNIFE	(2.5MM)
JCN 26216	SERVICE SPOON	(4.0MM)
JCN 26240	SERVICE FORK	(4.0MM)
JCN 26237	SAUCE LADLE	(4.0MM)
JCN 262110	SOUP LADLE	(4.0MM)



GRACY JCG 263

JCG 26335	COFFEE SPOON	(2.5MM)
JCG 26310	TEA SPOON	(2.5MM)
JCG 26312	DESERT SPOON	(3.0MM)
JCG 26342	DESERT FORK	(3.0MM)
JCG 26359	DESERT KNIFE	(FORGED)
JCG 26313S	SOUP SPOON	(3.0MM)
JCG 26338	COCKTAIL SPOON	(2.5MM)
JCG 26313	TABLE SPOON	(4.0MM)
JCG 26343	TABLE FORK	(4.0MM)
JCG 26353	TABLE KNIFE	(FORGED)
JCG 26316	SERVICE SPOON	(3.0MM)
JCG 26314	BUTTER KNIFE	(2.5MM)
JCG 26360	STEAK KNIFE	(FORGED)

CUTLERY

ORCHID CUTLERY

CODE : JCO 259		
JCO 25935	COFFEE SPOON	(3.0MM)
JCO 25941	CAKE FORK	(3.0MM)
JCO 25910	TEA SPOON	(3.0MM)
JCO 25912	DESSERT SPOON	(4.0MM)
JCO 25942	DESSERT FORK	(4.0MM)
JCO 25959	DESSERT KNIFE	(4.0MM)
JCO 25913	TABLE SPOON	(4.0MM)
JCO 25943	TABLE FORK	(4.0MM)
JCO 25953	TABLE KNIFE	(FORGED)



IRIS CUTLERY

CODE : JCI 258		
JCI 25835	COFFEE SPOON	(3.0MM)
JCI 25810	TEA SPOON	(3.0MM)
JCI 25812	DESSERT SPOON	(4.0MM)
JCI 25842	DESSERT FORK	(4.0MM)
JCI 25859	DESSERT KNIFE	(4.0MM)
JCI 25813	TABLE SPOON	(4.0MM)
JCI 25843	TABLE FORK	(4.0MM)
JCI 25853	TABLE KNIFE	(FORGED)



JEWEL CUTLERY

CODE : JCJ 112		
JCJ 11216	SNAIL FORK	(2.0MM)
JCJ 11235	COFFEE SPOON	(2.0MM)
JCJ 11210	TEA SPOON	(2.0MM)
JCJ 11241	CAKE FORK	(2.0MM)
JCJ 11203	ICE CREAM SPOON	(2.5MM)
JCJ 11212	DESSERT SPOON	(2.5MM)
JCJ 11242	DESSERT FORK	(2.5MM)
JCJ 11259	DESSERT KNIFE	(5.0MM)
JCJ 11213S	SOUP SPOON	(2.5MM)
JCJ 11213	TABLE SPOON	(2.5MM)
JCJ 11243	TABLE FORK	(2.5MM)
JCJ 11253	TABLE KNIFE	(5.0MM)
JCJ 11238	COCKTAIL SPOON	(2.5MM)
JCJ 11216	SERVING SPOON	(2.5MM)

MONICA CUTLERY

CODE : JCM 206		
JCM 20635	COFFEE SPOON	(2.0MM)
JCM 20610	TEA SPOON	(2.0MM)
JCM 20641	CAKE FORK	(2.0MM)
JCM 20612	DESSERT SPOON	(2.5MM)
JCM 20642	DESSERT FORK	(2.5MM)
JCM 20659	DESSERT KNIFE	(FORGED)
JCM 20613S	SOUP SPOON	(3.0MM)
JCM 20613	TABLE SPOON	(3.0MM)
JCM 20643	TABLE FORK	(3.0MM)
JCM 20653	TABLE KNIFE	(FORGED)
JCM 20616	SERVING SPOON	(3.0MM)



CUTLERY



LOTUS PLAIN CUTLERY

CODE : JCLP 238

JCLP 23835	COFFEE SPOON	(2.0MM)
JCLP 23810	TEA SPOON	(2.0MM)
JCLP 23812	DESSERT SPOON	(2.5MM)
JCLP 23842	DESSERT FORK	(2.5MM)
JCLP 23813	TABLE SPOON	(3.0MM)
JCLP 23843	TABLE FORK	(3.0MM)
JCLP 23853	TABLE KNIFE	FORGGED
JCLP 23816	SERVING FORK	(2.0MM)

SHAFIELD CUTLERY

CODE : JCS 106

JCS 10635	COFFEE SPOON	(2.0MM)
JCS 10610	TEA SPOON	(2.0MM)
JCS 10612	DESSERT SPOON	(2.5MM)
JCS 10642	DESSERT FORK	(2.5MM)
JCS 10613	TABLE SPOON	(3.0MM)
JCS 10643	TABLE FORK	(3.0MM)
JCS 10653	TABLE KNIFE	FORGGED
JCS 10616	SERVING FORK	(2.0MM)



ALIGRO

CODE : JCA 257

JCA 25735	COFFEE SPOON	(1.8MM)
JCA 25710	TEA SPOON	(1.8MM)
JCA 25712	DESSERT SPOON	(2.0MM)
JCA 25742	DESSERT FORK	(2.0MM)
JCA 25759	DESSERT KNIFE	(5.0MM)
JCA 25713S	SOUP SPOON	(2.0MM)
JCA 25713	TABLE SPOON	(2.0MM)
JCA 25743	TABLE FORK	(2.0MM)
JCA 25714	BUTTER KNIFE	(2.0MM)
JCA 25716	SERVICE SPOON	(2.0MM)
JCA 25740	SERVING FORK	(2.0MM)



ROSE CUTLERY

CODE : JCR 171

JCR 17110	TEA SPOON	(1.6MM)
JCR 17141	CAKE FORK	(1.6MM)
JCR 17112	DESSERT SPOON	(1.8MM)
JCR 17142	DESSERT FORK	(1.8MM)
JCR 17159	DESSERT KNIFE	(4.5MM)
JCR 17113	TABLE SPOON	(1.8MM)
JCR 17143	TABLE FORK	(1.8MM)
JCR 17153	TABLE KNIFE	(4.5MM)



CLASSIC

CODE : JCC 202

JCC 20235	COFFEE SPOON	(1.8MM)
JCC 20210	TEA SPOON	(1.8MM)
JCC 20212	DESSERT SPOON	(2.0MM)
JCC 20242	DESSERT FORK	(2.0MM)
JCC 20259	DESSERT KNIFE	(5.0MM)
JCC 20213S	SOUP SPOON	(2.0MM)
JCC 20213	TABLE SPOON	(2.0MM)
JCC 20243	TABLE FORK	(2.0MM)
JCC 20214	BUTTER KNIFE	(2.0MM)
JCC 20216	SERVICE SPOON	(2.0MM)
JCC 20240	SERVING FORK	(2.0MM)



SUNFLOWER CUTLERY(FULL SATIN)

CODE:JCS172

JCS17210	TEA SPOON	(1.6MM)
JCS17241	CAKE FORK	(1.6MM)
JCS17212	DESSERT SPOON	(1.7MM)
JCS17242	DESSERT FORK	(1.7MM)
CS17259	DESSERT KNIFE	(4.5MM)
JCS17213	TABLE SPOON	(1.8MM)
JCS17243	TABLE FORK	(1.8MM)
JCS17253	TABLE KNIFE	(4.5MM)
JCS172125	CAKE SERVER	(2.5MM)
JCS17215	SALAD SPOON	(2.0MM)
JCS17245	SALAD FORK	(2.0MM)

CUTLERY



HONGKONG CUTLERY

CODE :JCHK169

JCHK16916	FRUIT FORK	(1.7MM)
JCHK16910	TEA SPOON	(1.5MM)
JCHK16912	DESSERT SPOON	(1.7MM)
JCHK16942	DESSERT FORK	(1.7MM)
JCHK16913	TABLE SPOON	(1.8MM)
JCHK16943	TABLE FORK	(1.8MM)
JCHK16953	TABLE KNIFE	(4.0MM)
JCHK16938	COCKTAIL SPOON	(1.7MM)



NEW STRIBES CUTLERY

CODE :JCNS152

JCNS15210	TEA SPOON	(1.5MM)
JCNS15241	CAKE FORK	(1.5MM)
JCNS15212	DESSERT SPOON	(1.7MM)
JCNS15242	DESSERT FORK	(1.7MM)
JCNS15213	TABLE SPOON	(1.8MM)
JCNS15243	TABLE FORK	(1.8MM)
JCNS15253	TABLE KNIFE	(4.0MM)



ATHENES CUTLERY

CODE :JCA193

JCA19310	TEA SPOON	(1.5MM)
JCA19341	CAKE FORK	(1.5MM)
JCA19313	TABLE SPOON	(1.8MM)
JCA19343	TABLE FORK	(1.8MM)
JCA19353	TABLE KNIFE	(4.0MM)
JCA19338	COCKTAIL SPOON	(2.5MM)



SIGMA BORDER CUTLERY

CODE: JCSB229

JCSB22935	COFFEE SPOON	(1.3MM)
JCSB22910	TEA SPOON	(1.3MM)
JCSB22941	CAKE FORK	(1.3MM)
JCSB22914	BABY SPOON	(1.3MM)
JCSB22929	BABY FORK	(1.3MM)
JCSB22913S	SOUP SPOON	(1.3MM)
JCSB22912	DESSERT SPOON	(1.3MM)
JCSB22942	DESSERT FORK	(1.3MM)
JCSB22959	DESSERT KNIFE	(2.0MM)
JCSB22913	TABLE SPOON	(1.3MM)
JCSB22943	TABLE FORK	(1.3MM)
JCSB22915	TABLE SERVING	(1.3MM)



GUNTER

JVG 315111 VEGETABLE SPOON



BASTING SPOON

CODE : JKF 498 (1.4MM)

JKF 49816 A	BASTING SPOON SOLID	(10MM)
JKF 49816 B	BASTING SPOON SOLID	(12MM)
JKF 49816 C	BASTING SPOON SOLID	(14MM)
JKF 49816 D	BASTING SPOON SOLID	(16MM)



HANDCRAFTED CUTLERY LILY

CODE : JHCL 204

JHCL 20435	COFFEE SPOON
JHCL 20410	TEA SPOON
JHCL 20441	CAKE FORK
JHCL 20412	DESERT SPOON
JHCL 20442	DESERT FORK
JHCL 20458	DESERT KNIFE
JHCL 20413	TABLE SPOON
JHCL 20443	TABLE FORK
JHCL 20450	TABLE KNIFE
JHCL 20436	FISH SPOON
JHCL 20446	FISH FORK
JHCL 20468	FISH KNIFE
JHCL 20457	FRUIT KNIFE



Wire Twisted 213



Square Twisted 212



Round Plain 214



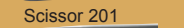
Knotted 203



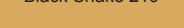
Square Plain 215



Square Hammered 216



Knotted Black Tail 217



Tail 218

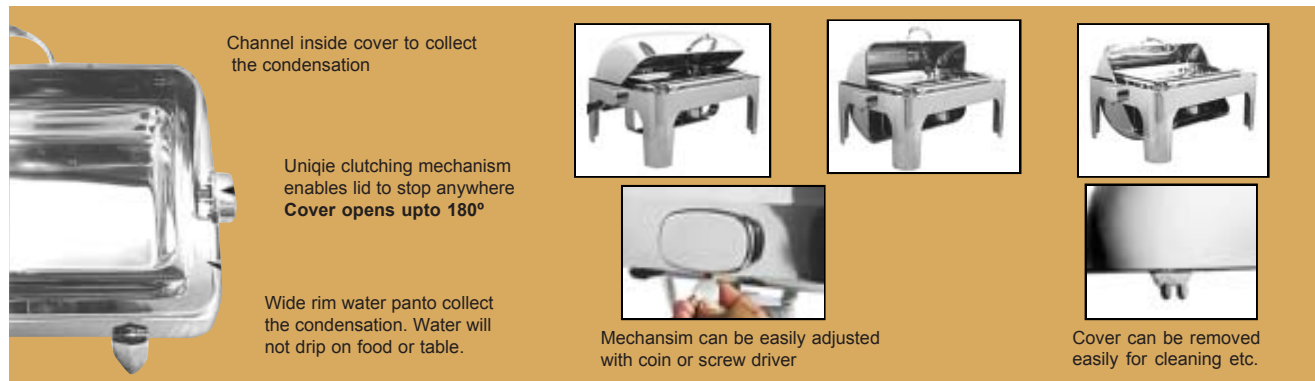


Scissor 201



Black Snake 219

CHAFING DISHES



JMEC-15 Dripless Rectangular Roll Top Chafing dish
with Forged Solid Chrome Plated Legs
Dimensions (Overall) : (L) 69 cm × (W) 49 cm × (H) 43 cm
Capacity Foodpan : 8 ltrs Waterpan : 14 ltrs
(Also available with Forged Solid Brass Legs JMEC-17 & Chrome plated brass legs JMEC-19)
Material Grade - 304 (Stand 202)



JMEC-16 Dripless Round Roll Top Chafing dish
with Forged Solid Chrome Legs
Dimensions (Overall) : (L) 52 cm × (W) 47.5 cm × (H) 44.5 cm
Capacity Foodpan : 8 ltrs
(Also available with Forged Solid Brass Legs JMEC-18 & Chrome plated JMEC-20)
Material Grade - 304 (Stand 202)

* Same Features For Dripless Round Roll Top Chafing Dish
As Given Above



JMEC-1 - Rectangular Full Roll Top Chafing dish with Mechanism to Slowdown Rotation of Cover (All in S.S.)
Dimensions (Overall) : (L) 64 cm × (W) 44 cm × (H) 43 cm
Capacity Foodpan : 8 ltrs Waterpan : 14 ltrs
Net Weight Approx : 12.2Kg
Cover opens upto 180° with Auto-Lock at 90°
(Also available with Brass Legs JMEC-1B, with Chrome Plated Brass Legs JMEC-1C & in Heavy Gz. 18/08 JMEC-03)



JMEC-2 - Round Large Full Roll Top Chafing dish
All Stainless steel
Dimensions (Overall) : (Dia.) 46.5 cm × (H) 45 cm
Capacity Foodpan : 7 ltrs.
(Also available with 5 ltrs. capacity Foodpan)
Net Weight Approx : 8.4Kg
Cover opens upto 180° with Auto-Lock at 90°
(Also available with Brass Legs JMEC-2B, with Chrome Plated Legs JMEC-2C & Heavy Gz. 18/08 JMEC-04)



JMEC-41GS - Round Large Induction Chafer, All Stainless steel with stainless steel stand with adjustable mechanism to dampen the cover movement
Dimensions (Overall) : (Dia.) 41.5 cm × (H) 30 cm
Capacity : 7 ltrs.
With Adjustable Mechanism to Dampen the Cover movement
(Also available in Square Shape)



JCDR-411E - Round Large Size Lift Top Chafing Dish
Food Pan Capacity available
For 7 ltrs. Dimensions (Overall) : (Dia.) 41.5 cm × (H) 30 cm
For 5 ltrs. Dimensions (Overall) : (Dia.) 34 cm × (H) 31 cm **JCDR-412E**
(Also available Straight Pipe Legs & Brass Legs)

CHAFING DISHES



JCDG-0111M - Rectangular Full Size Chafing Dish, All Stainless Steel, Accomodates Gastronorms full size Foodpan upto 100mm deep
 Dimension : (L)53.5 x (W) 30.5 x (H) 32cm
 Foodpan Capacity : 8 ltrs.
 Waterpan Capacity : 14 ltrs.
 Net Weight : 9 Kg.
 (Also available with Foodpan Capacity 4ltr.)



JCDR-415 - Round Soup Station
 Dimension Overall Dia : 34cm x (H) 36cm
 Capacity : 5 ltrs.
 Net Weight : 4.2Kg



JCDG-115 - Rectangular Soup Station with two Soup Tureens
 Capacity : 5 + 5 ltrs.
 Dimensions : (L) 54cm x (W) 33.5cm x (H) 40.5cm
 Net Weight : 9.3Kg
 (Also available with single SQUARE Soup Tureen (Capacity : 5 ltrs.))

HOLLOWARE



JMEC 9
Soup Warmer, With Forged Solid Brass Legs, handles and knob Hinged Cover for Ease of Use
 Dimensions(Overall): (Dia.) 27 cm x (H) 52.5 cm
 Capacity : 8.5 ltrs.
 Net Weight (approx) : 9.6 kg
 Note: Also available with Chrome Plated Legs and handles/knob (MEC 9C)



JMEC 11
Juice Dipenser, All Stainless Steel With Polycarbonate body
 Dimensions(Overall): (Dia.) 20 cm x (H) 62 cm
 Capacity : 6.6 ltrs.
 Net Weight (approx) : 5.2 kg



JMEC 7
Coffee/Tea Urn, All Stainless Steel with Brass handles and knob with Cover locking feature for extra safety
Double Walled Cover with PUF Insulation
 Dimensions(Overall): (Dia.) 27 cm x (H) 51 cm
 Capacity : 12 ltrs.
 Net Weight (approx) : 6.1 kg



29112
Oval Entrée Dish
 L x W
 7" x 5"
 8" x 6"
 10" x 7"



29115 Karahi
 Ø 7, 8, 8.5, 9,10"



29114 Hammered Snack Warmer
 Ø 8, 10"



29113 Round Snack Warmer
 Ø 7.5, 8.5"

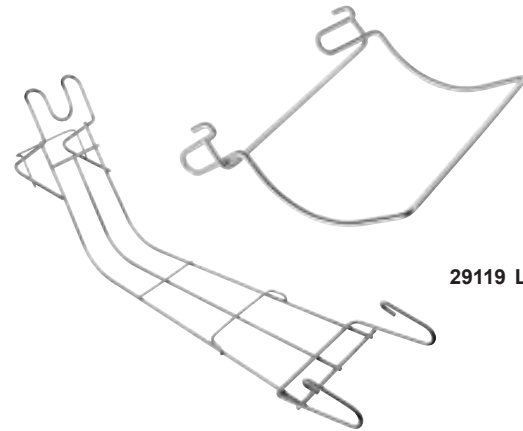


29111 Round Entrée Dish
 Ø 5, 6, 7, 8, 9,10"

HOLLOWARES



29117 Plate Cover with Beeding
Ø 10.5,11"



29119 Lid Rest



29118 Plate Cover
Ø 11.5,12.5"

29120 Hanger

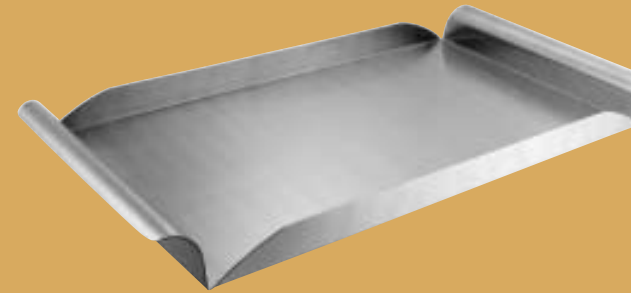


29121 Round Food Partition



29122 Electric Element
Small 230V, 300Watts
Large 230V, 400Watts

TRAYS & PLATTERS



20109 Multipurpose Tray



20139 Matt Plate



20140 SERVING Tray



20122 Bar Tray



20101 Oval Platter
L x W
10" x 7"
12" x 8"
13" x 9"
16" x 11"
18" x 12"

TRAYS & PLATTERS



20141 Round Salver
Ø 10, 13, 16"



20142 Round Platter
Ø 10, 12, 14, 16, 18, 20"



20143 Service Tray
L x W
16" x 11"

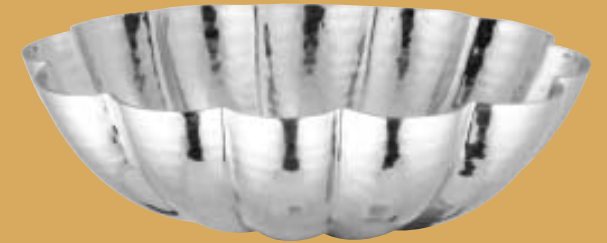


20144 Display Tray
L x W
13" x 9"
14" x 10"



20145 Tea Tray
L x W
14" x 10.5"

FRUIT BOWL



22127 FRUIT BOWL
Ø 10"



22126 FRUIT BOWL
Ø 7.5"



22129 FRUIT BOWL



22128 FRUIT BOWL
Ø 10"

BARWARE



(A)



(B)



(C)

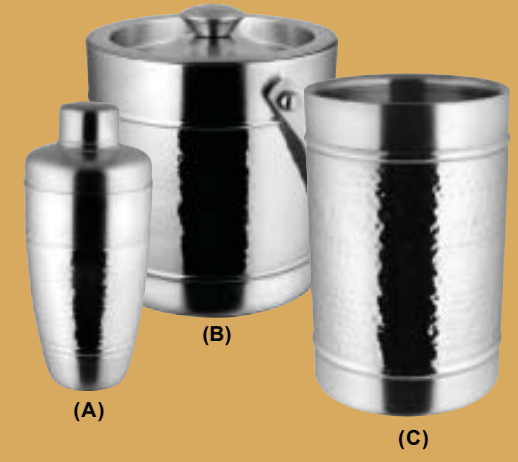


(A)

(B)

(C)

16160 NOVA BAR SET

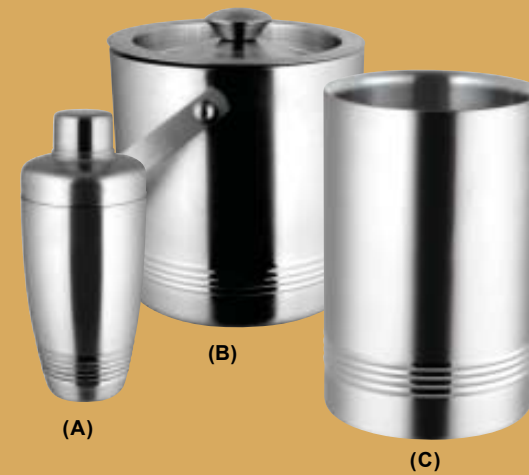


(A)

(B)

(C)

16127H BAR SET WITH HAMMERED



(A)

(B)

(C)

16127R BAR SET WITH RIB



16153 CHAMPAGNE BOWL
Ø 35, 40CM

BARWARE



16127 GLOBE ICE BUCKET WITH TONG



17102 ROUND BAR TOOL SET



17101 BAR TOOL SET



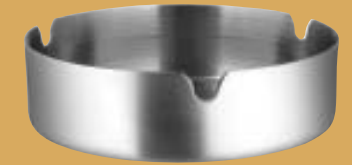
16123 9 PC BAR SET (PIMPLE)
Ice Bucket
Wine Cooler
Cocktail Shaker
Bar Tray
5 Pc Bar toolset



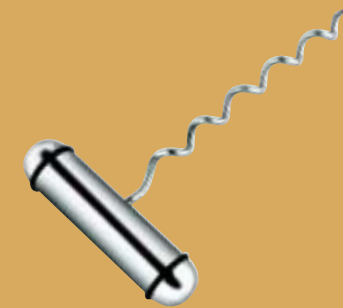
16126N 9PC. LEATHER BARWARE SET
1x ICE BUCKET
1x WINE CHILLER
1x COCKTAIL SHAKER 1x BAR TRAY
5x BARTOOL SET



(A) D/W (B) D/W
16105 ASH TRAY



16104 ASH TRAY
Ø 8,10,12,15CM



16156 CORK SCREW

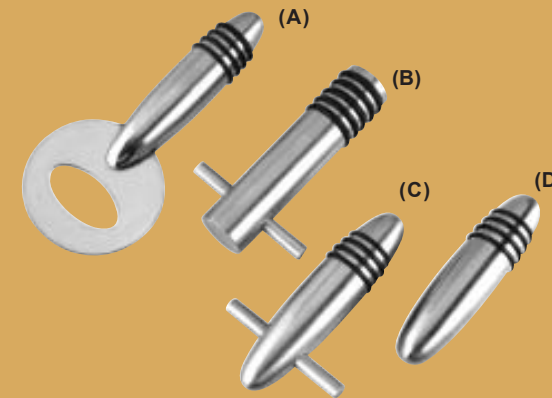


(A)

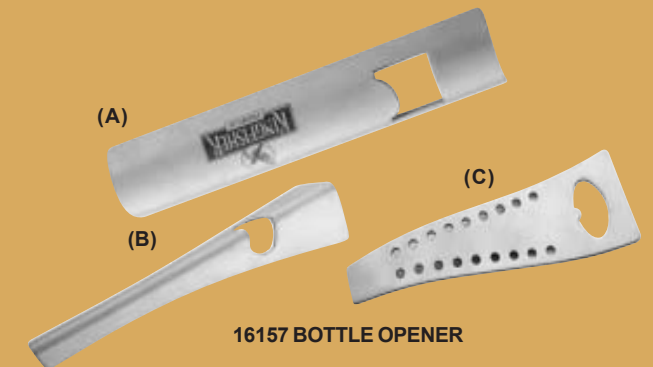


(B)

16102 ASH TRAY
Ø 10CM

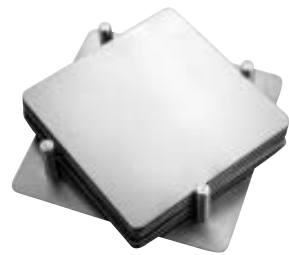


16155 BOTTLE STOPPER



16157 BOTTLE OPENER

TABLEWARE



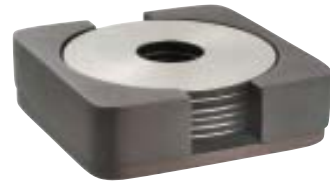
(A)



(B)

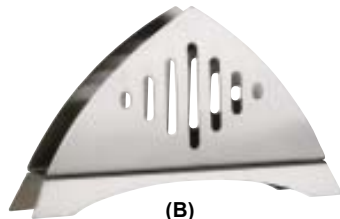


(C)

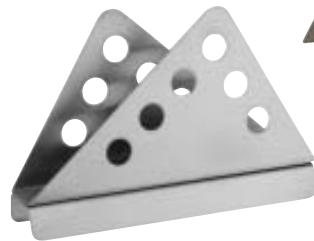


(D)

22101 COSTER SET



(B)

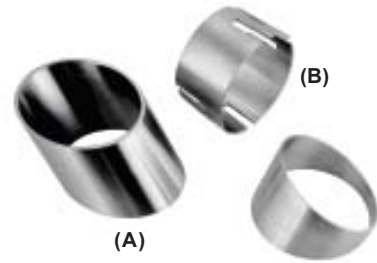


(A)

22108 NAPKIN HOLDER



(C)



(A)



(B)



(C)

22131 NAPKIN RING



(A)

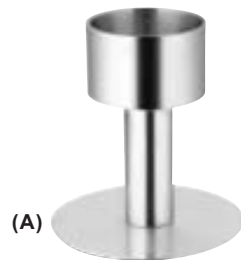
22106 TABLE PLATE



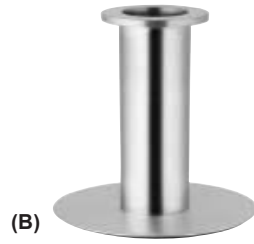
(B)



22130 T LIGHT HOLDER



(A)



(B)

22132 CANDLE STAND



13120H GRAVY BOAT
Cap. 3, 5, 8oz



19126 TEA CUP WITH SAUCER



19125 TEA CUP WITH SAUCER



19123 COFFEE MUG



19124 TEA CUP WITH SAUCER



21115 CANDY BOWL



18129 TEA SET

TABLEWARE



1155 CHIP N DIP - GRD



22127 CHIP & DIP



22134 CAKE STAND



(A)



(B)

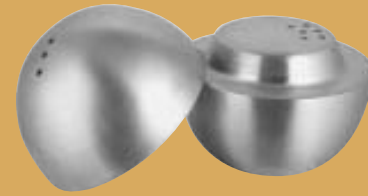
22123H ICE CREAM CUP



1146 - 9Pcs NIFTY THALI SET



29129 BUTTER DISH



15107 GLOBE SALT & PEPPER



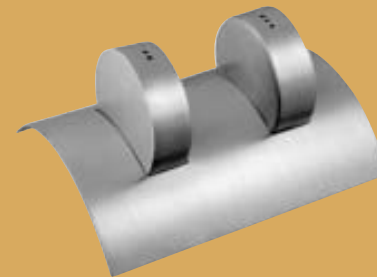
15108 SALT & PEPPER



15110 SQUARE SALT & PEPPER
Ø4X4CM



15109 SALT & PEPPER



15123 SALT & PEPPER



15121 SALT & PEPPER
Ø 3.2X7.5, 3.2X9.0CM



15118 SALT & PEPPER 4 IN 1



19104 WATER JUG



19105 WATER JUG



19106 WATER JUG



19107 WATER JUG



19127 WATER JUG

TABLEWARE



(A)



(B)



(C)

22120 BREAD BASKET
Ø 20,22CM



(D)



(A)

22119 BUD VASE



(B)



(A)

15132 TOOTH PIC



(B)

BATHWARE & BINS



26105 4pc BATHROOM SET



26103 4pc BATHROOM SET



26110 PADLE BIN
CAP 3,5,11LTR



26108 PAPER BINS
Ø 18×25, 20×30, 25×35CM



26112 OVEL BIN



26109 PUSH BIN
Ø 15×26,20×70CM



26111 ASH CAN



Jagdamba[®]
EXPORTS

Factory / Show Room :Plot No: 153 I&j, HSIDC Ind. Area
EPIP Kundli, Distt Sonipat, Haryana- 131028 (INDIA)
Fax : +91 130 2374157 Fax : +91 130 2374452
Tel : +91 130 2374453 - 56

E-mail : india@jagdambaflatware.com(Domestic), info@jagdambaflatware.com(Export)
Web : <http://www.jagdambaflatware.com>, www.flatware.in

di[®]

Jagdamba

HOTELWARES

Shri & Sam